



CAPABILITY STATEMENT

**WORLD CLASS QUALITY,
SERVICE AND DELIVERY
AT THE RIGHT PRICE**



As a full-service machine shop, we manufacture, modify, and repair prototype and production parts for a wide variety of clients. We pursue manufacturing perfection with a precise mix of quality, service, delivery, and price! We use 3,4,5 and 6 axis CNC machining, in-house Wire EDM, CNC grinding and now 3D Printing, to offer full-service completion of your project. We are a true single-source vendor and one stop shop.

➤ MANUFACTURING TECHNOLOGY

Precision CNC Milling Centers (3,4 & 5-Axis)

- (2) Mori Seiki NMV5000 | 5-axis (28"x20"x20")
- (1) Doosan DVF 5000 | 5-axis pallet changer (25"x18"x16")
- (1) Mori Seiki SV500B | 4-axis (40"x20"x20")
- (1) Mori Seiki 5000 | 4-axis (30"x20"x20")
- (1) Mori Seiki SV500 | 3-axis (30"x20"x20")
- (1) Mori Seiki NC1500 | 3-axis (6"x6"x8")
- (1) TRAK FHM5 Mill | 3-axis (40"x20"x24")
- (1) TRAK DPM Mill | 3-axis (34"x10"x24")
- (2) Bridgeport | 2-axis w/ ProtoTrak CNC Control

CNC Multi-Tool Machining Center (4,5 & 6-Axis)

- (1) DMG Mori CTX Beta 800 TC | 6-axis (19.7" DIA X 47.2")
- (1) Mori Seiki NL2000SY | 5-axis (14" DIA X 20")
- (1) Miyano BND-51S2 | 4-axis (6" X 12.6")
- (1) Doosan Puma 5100 LYB | 5-axis (22" DIA X 85")

CNC Turning Centers

- (2) Samsung SL25 | (13.8" DIA X 24")
- (1) Samsung SL-25 -1000 | (13.8" DIA X 40")
- (1) Mori Seiki CL-25B | 13.8" DIA x 17")
- (1) TRAK TRL 1840 | (18" DIA X 40.2" b/w Centers)

CNC Grinding Centers

- (1) Toyoda Select G100II CNC Grinder | (12" X 40")
- (1) Heald I.D. Grinder Model 273A | (18" X 22")
- (1) Moore #3 Jig Grinder | 12" X 24")
- (1) Okamoto Surface Grinder | (16" X 32" X 18")
- (2) Reid Surface Grinder | (6" X 18")

Wire EDM

- (2) Charmilles Robofil 440SL 4-axis Submersible Wire EDM | (21.6" X 13.7" X 15.75")

Additive Manufacturing (3DP Metal & Plastic)

- (3) Markforged MetalX
- (2) Markforged Mark 2
- (2) Custom Nylon Printers
- (1) Meltio M450

➤ MATERIALS

- Aluminum, Stainless & Tool Steel, Titanium, Inconel
- Carbon Fiber, Kevlar, Onyx
- ABS Plastic, Nylon

➤ KEY DIFFERENTIATORS

- Automation: Fully robotic cells & pallet changers
- Prime Contractor to US Government
- In-house equipment for vertical integration
- Vertically integrated processes capability
- Rapid quoting software for <24hr. response
- Dedicated, experienced Engineering Team

➤ COMPANY DATA

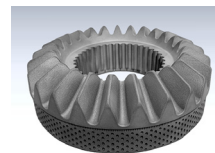
- CAGE CODE: 4QXQ6 | DUNS#: 048084248
- ITAR Registered | US Owned Small Business
- Certifications: AS 9100
- NAICS: 332710, 332721, 333514

➤ SUPPORT RESOURCES

- CAD / CAM: Catia, Solidworks, Gibbs Cam; PCDMIS CAD++
- Inspection: Xcel 5-Axis CMM; Sheffield CMM; Optical Comparator; Rockwell Tester & more.

➤ PAST PROJECTS

AM Net Shapes: 3D printers are allowing us to offer solutions in hours instead of days or weeks. We print Inconel, carbon fiber, stainless steel, tool steel, copper, nylon, Kevlar and more.



Gears: MetalMite's Wire EDMs are accurate enough to cut the gages used by most gear cutters. We also use Live tooling hobbors to cut splines while in the turning operations. We shaper-cut & mill teeth on as well.



5-Axis: With fuel economy becoming more and more important, General Motors needed a more efficient flywheel for their engines, and it needed to be manufactured using the highest standards possible. This all aluminum flywheel is the answer.

